

Theme 1 Children, Young People and Families

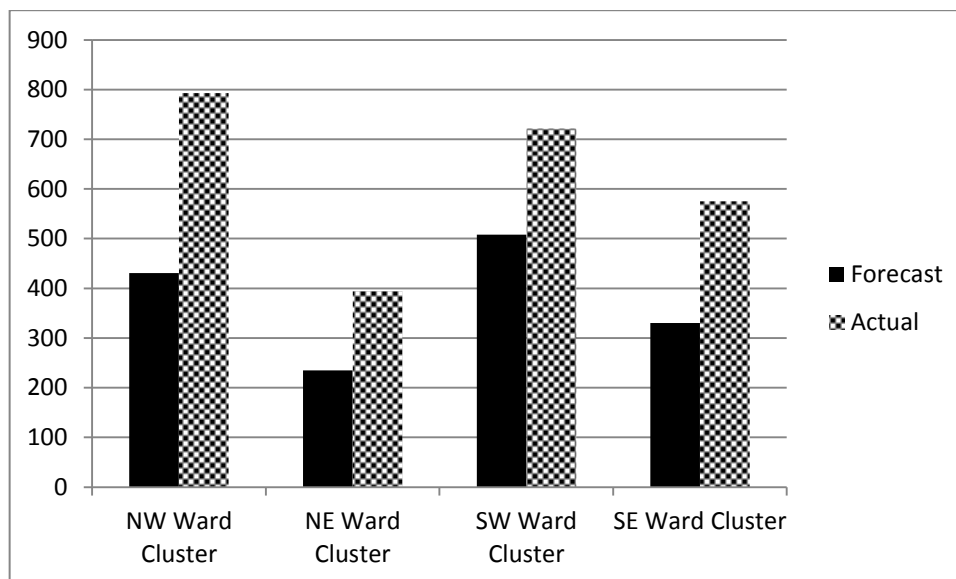
MSG Programme Period 3 (Apr-Jun 2016) Performance Report

Theme 1 – Children, Young People & Families: This theme focuses on seeking the following key outcomes:

- Improved levels of participation, educational attainment and progression for children and young people.
- Children and young people are protected from harm and families are supported to provide a safe environment.
- Harmful relationships among peer/gender groups are reduced.
- Improved physical (such as reduced levels of obesity) and emotional health and wellbeing in children and young people.
- Reduced levels of substance misuse and sexual abuse, violent crime (including domestic violence) and anti-social behaviour.

Geographical Breakdown

The table below shows the number of beneficiaries supported during the period April to June 2016 by Ward Cluster:



NW Ward Cluster	NE Ward Cluster	SW Ward Cluster	SE Ward Cluster
<ul style="list-style-type: none"> • Bethnal Green • Spitalfields & Banglatown • St Peter's • Weavers 	<ul style="list-style-type: none"> • Bow East • Bow West • Bromley North • Bromley South • Mile End 	<ul style="list-style-type: none"> • Shadwell • St Dunstons • St Katherine's & Wapping • Stepney Green • Whitechapel 	<ul style="list-style-type: none"> • Blackwall & Cubitt Town • Canary Wharf • Island Gardens • Lansbury • Limehouse • Poplar

Raising Attainment Project Portfolio – Children’s Services

No. of live projects – Apr-Jun 16	No. of projects classed as GREEN	No. of projects classed as AMBER	No. of projects classed as RED
9	9	0	0

There are 9 projects in this category; all classed as ‘Green’ and meeting the agreed expenditure targets, service outputs and outcomes as indicated in monitoring reports and case studies received. All projects are working closely with schools and parents to provide reciprocal feedback on their young students. Officers will continue to work with organisations to ensure quality driven provision.

Vulnerable & Excluded Families Project Portfolio – Children’s Services

No. of live projects – Apr-Jun 16	No. of projects classed as GREEN	No. of projects classed as AMBER	No. of projects classed as RED
6	6	0	0

There 6 projects in this category; all of which are classed as ‘Green’ and are on course to meet the agreed expenditure targets, service outputs and outcomes as indicated in monitoring reports received.

Community Languages Project Portfolio - CLC

No. of live projects Apr-Jun 2016	No. of projects classed as GREEN	No. of projects classed as AMBER	No. of projects classed as RED
10	9	1	0

There are 10 projects in this category; 9 of which are classed as ‘Green’ and are on course to meet the agreed expenditure targets, service outputs and outcomes as indicated in monitoring reports received.

Teviot British Bangladeshi Association (TBBA) – Opportunity – is classed as Amber. There have been continuous problems with obtaining information from the organisation and activity has not been able to be verified. The project is now on a Summer break so no activity can be verified until September.

The April – June 2016 Monitoring Return is late being submitted.

Youth Services Project Portfolio - CLC

No. of live projects – Apr-Jun 16	No. of projects classed as GREEN	No. of projects classed as AMBER	No. of projects classed as RED
17	15	2	0

There are 17 projects in this category; 15 of which are classed as 'Green' and are on course to meet the agreed expenditure targets, service outputs and outcomes as indicated in monitoring reports received.

2 classed projects classed as Amber:

City Gateway – Back on Track: Engagement and Progression had had issues with their delivery location and had been classed as Red previously.

A new delivery location has been identified and the project has been classed as Amber pending verification of activity that has already taken place and confirmation of variations to the Grant Offer Letter.

Wadajir Somali Community Centre – Homework Club is classed as Amber. The organisation has recently moved premises and payments are currently on hold awaiting verification. Visit scheduled by 31 August 2016.

Sports Project Portfolio - CLC

No. of live projects – Apr-Jun 16	No. of projects classed as GREEN	No. of projects classed as AMBER	No. of projects classed as RED
7	7	0	0

There are 7 active projects in this category; all of which are classed as 'Green' and are on course to meet the agreed expenditure targets, service outputs and outcomes as indicated in monitoring reports received.

Culture Project Portfolio - CLC

No. of live projects – Apr-Jun 16	No. of projects classed as GREEN	No. of projects classed as AMBER	No. of projects classed as RED
10	6	2	2

There 10 active projects in this category; 6 classed as 'Green' and are on course to meet the agreed expenditure targets, service outputs and outcomes as indicated in monitoring reports received.

2 projects are classed as Red:

Mile End Community Project - Female Leadership and Empowerment Project

Organisation has outstanding monitoring information to submit to LBTH, including: collated beneficiary records; progress on outcomes; accurate Quarterly Expenditure Transaction List for Period 2; beneficiary registration forms; equalities monitoring; copies of invoices; management committee minutes; confirmation of DBS clearance for staff; job descriptions.

No outputs were delivered by project in Period 3 and no funds were spent. Organisation has not offered satisfactory reasons for this happening.

Ragged School Museum - Family Learning Holiday Programme

This project is on red for under-performance. Its outputs are assessed at the end of each financial year. The Museum has since informed their Grant Officer that the agreed output target for the first financial year of the project, the seven month period September 2015 to March 2016, was a mistake as it related to activity for a full 12 months.

On 8th August the Museum informed their Grant Officer that it would like to take up the offer of a revised profile for discussion, which would be what was achieved in first two Periods by project, plus original targets for remainder of project.

2 projects are classed as Amber:

Monakka Monowar Welfare Foundation (MMWF) - Life-changing Musical and Keep-fit Project

Organisation was unable at project monitoring meeting on 20th July to provide evidence to confirm progress on the majority of the project's outputs, which focus on how the project secures improvements in educational attainment, social inclusion and health for beneficiaries. MMWF's Director has promised to send a report, based on project discussions with beneficiaries and their parents, which will record and confirm progress on these outputs. The Grant Offer Letter for the project had a number of evidence requirements for these outputs which the project has not been maintaining.

Organisation was Red at Period 2 due to under-performance. It reports that it has met re-configured outputs for project as at Period 3, benefitting from change in timetable for project activities. LBTH is awaiting information to confirm attainment of most of these outputs.

The Shadwell Community Project - The People GAP

The following information is still outstanding

- Revised and accurate Quarterly Expenditure Transaction Lists for both Periods 1, 2 and 3.
- Bank statement to confirm salary payments for June 2016.
- Monitoring information for outcomes achieved in Period 1

a one page summary of the actions which SCP has taken in response to Playground Annual Inspection report from October 2015.

Grant Officer has been liaising with organisation on an ongoing basis to receive satisfactory monitoring information for Periods 1 and 2. Revised Quarterly Expenditure Transaction Lists have been submitted for Periods 1, 2 and 3, but totals quoted are much less than what is in Grant Offer Letter.

Organisation is working on an improvement plan with the CVS.